

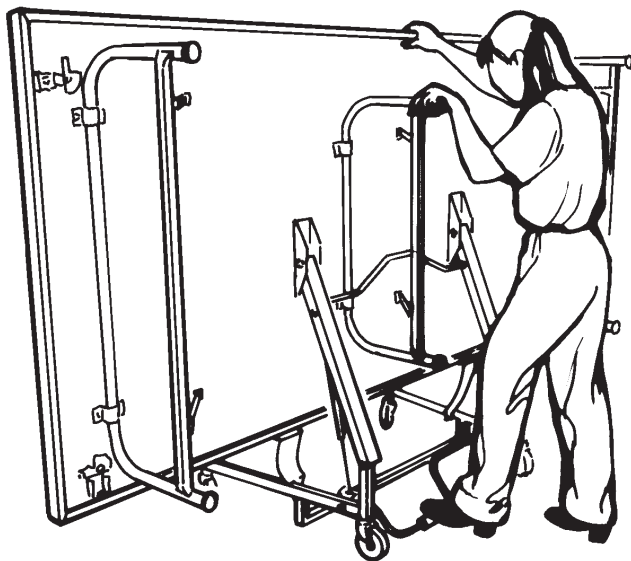
# Stagehand® Staging

- Decks are available in 4' x 8' (1219 x 2438 mm) sizes in the following heights: 16" (406 mm) fixed height, 24" (610 mm) fixed height, 16"/24" (406/610 mm) dual height, and 24"/32" (610/813 mm) dual height.
- Each deck is equipped with pneumatic springs to assist in setup and takedown, allowing one-person ease of use.
- Decks are constructed of solid core 3/4" (19 mm) plywood.  
Top surfaces available are: black slip resistant or grey carpet.
- Legs are one-piece 16 gauge 1-1/4" (32 mm) steel tubing with a reinforcing cross brace.  
Locking angle-braces allow for easy set-up and sure stability. Legs have an electrostatically applied black epoxy paint finish.
- Frame and edging are fabricated from 16 gauge steel with a grey powder-coat painted finish.
- Unit-to-unit frame clamps have a cam-action for easy positive locking to the frame of the adjacent unit.  
One clamp per side of each stage unit, provides two points of connection when units are locked together.
- Units nest for compact storage. The first stagehand unit needs 27" (686 mm) and each additional unit only adds 12" (305 mm).  
When stored, units are 61-1/2" (1562 mm) high and 96" (2438 mm) long.
- Environmental attributes and LEED compliance for this product can be found at [www.wengercorp.com/GREEN](http://www.wengercorp.com/GREEN) or by contacting your Wenger representative.
- Five-year warranty.

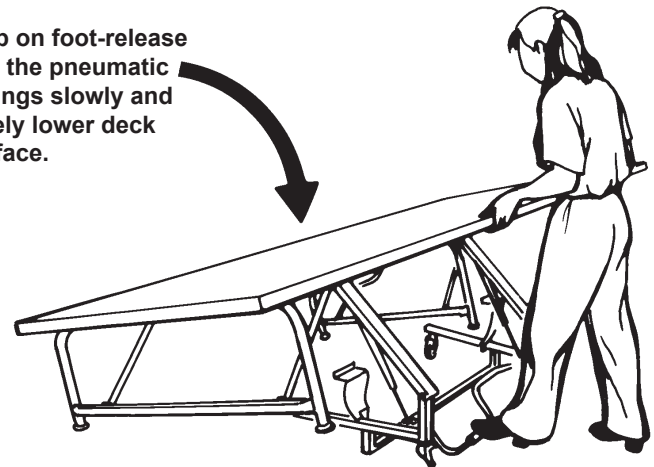
**Accessories Include:**

- Two- or three-step stairways include attached handrails for safety and non-slip step treads.  
Steps measure 39" (991 mm) wide by 11" (279 mm) deep. Black finish.
- Guardrails comply with most building code requirements for loading.  
Guardrails are 42" (1067 mm) high and come with either two crossbars or an infill panel that comply with the 4" (102 mm) sphere requirements of some building codes.
- Drapery closures and backdrops are available to give stage a finished look.  
Stage and backdrop drapery available in a wide variety of colors. Drapery is 100% fire retardant polyester woven fabric.

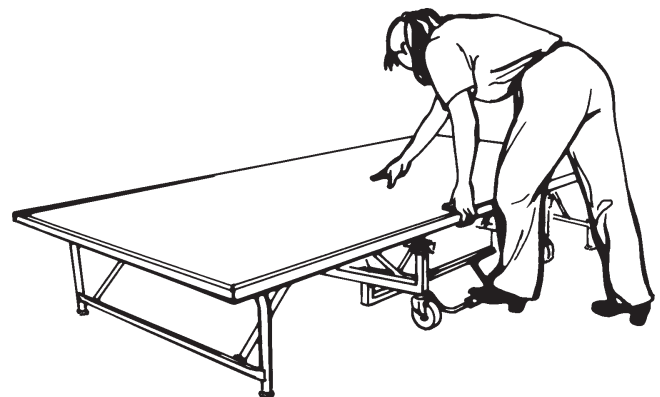
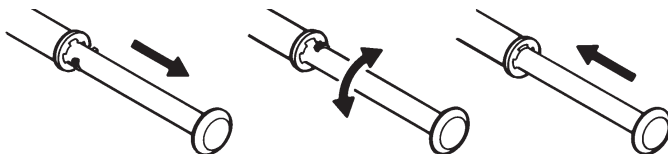
**Straight Forward, Simple Operation**



Step on foot-release and the pneumatic springs slowly and safely lower deck surface.



**Dual Height Leg Adjustment**



© 2017 Wenger Corporation  
USA/2017-12/W

