

Encore Chair

Elegant,
high-quality
posture chair



UK FREEPHONE **0800 072 7799**
PHONE **+44 (0)1892 619719**
VISIT **www.blackcatmusic.com**

Encore Chairs

The Encore chair was developed with the Royal Northern College of Music's Alexander Technique specialist, Malcolm Williams, in conjunction with Emma Farrand, Cello Tutor and member of the National Youth Orchestra. It was designed specifically to help the students and is now used extensively throughout the College. It also so impressed the BBC that they purchased a quantity for the BBC Symphony Orchestra!

The design of the Encore Chair recognises the fact that posture is an important consideration for musicians. Good posture when playing aids breathing and freedom of movement, whilst lengthening the spine naturally and strengthening the torso. Many musicians use the 'Alexander Technique' to improve their posture when playing seated orientated instruments such as violins, tubas and bassoons.

- Curved 'waterfall' seat edge and slender back help sustain a more upright and poised position
- Sturdy black tubular frame
- Choice of three floor-to-seat heights: 44cm, 47cm and 49cm. Custom heights available on request.
- Chairs can be stacked neatly on top of each other
- Choice of seven fabric colours
- Available ex stock in black. Three week delivery time on colours
- Move and Store Cart available

"The Encore chair is fully supported by the Royal Northern College of Music"

MARTIN ANGELL,
PURCHASING MANAGER,
ROYAL NORTHERN
COLLEGE OF MUSIC



A SMALL SELECTION OF OUR ENCORE CHAIR CUSTOMERS:

- Royal Northern College of Music
- Scottish Opera
- Guildhall School of Music & Drama
- Steiner Academy
- Clifton College
- CATS Cambridge
- Westminster School
- Canford School
- Oakham School

Encore Chairs

ENCORE CELLO CHAIR

- Specially designed for cellists, the Encore Cello Chair offers a fully cushioned seat and back and extra forward tilt.
- Chair leans forward, providing optimal music posture for cellists
- Cushioned seat and back provide long-lasting comfort during long rehearsals and performances
- Rounded seat front for added comfort
- Slender back support design promotes freedom for arms while playing
- Sturdy, tubular frame



“I always enjoy ordering from Black Cat – your service is great, fast and informative”

ANNA MILLER, DIRECTOR OF MUSIC, NEWTON PREP

ENCORE CHAIR WITH GANGING LINK FOR AUDIENCE SEATING

This Encore chair model is designed specifically for audience seating and includes a ganging link to hold chairs in place.

ENCORE JUNIOR CHAIR

- The Encore Junior Chair is a smaller, light weight version of the ever popular Encore Chair. A well-researched and developed chair offering comfort and support to the young musician. With its curved ‘waterfall’ edge and slender back, musicians sustain a more upright and poised position.
- The design of the Encore Junior Chair recognises the fact that posture is an important consideration for musicians of any age.



WHAT TO LOOK FOR IN A CHAIR

Features of a good seat:

- Ideally the seat should be horizontal and flat to allow a range of positions and angles in relation to the back.
- A 'waterfall' edge at the front of the chair to aid musicians when leaning forward to adjust the score whilst preventing restricted circulation to the legs. Players who 'carry' their instruments are inclined to tuck one leg under the chair to increase stability, so the curved edge of the chair is especially beneficial to them.
- Curved side edges on the chair reduce the risk of damage to instruments which are placed to one side during periods of rest.
- The seat should be sufficiently well padded to prevent tiredness and discomfort during long rehearsals or performances.

Features of a good back support

- Good lumbar support will promote full and unrestricted breathing and prevent backward rotation of the pelvis which is particularly important to players who 'carry' heavy instruments (viola, violin, trumpet etc.)
- The back of the chair should be of good height to further assist carrying the instruments.
- A narrower back width will aid unrestricted arm movements when playing instruments such as the violin or horn, but will also allow tailcoats to be flicked behind when male musician sit.
- The back of the chair should be supported on a strong frame to assist comfort and confidence.

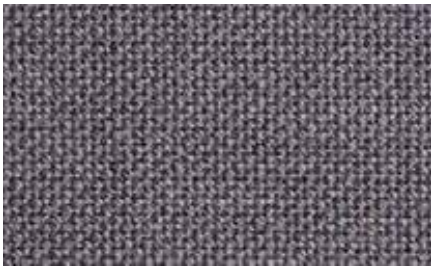
ENCORE CHAIR FABRIC COLOUR SAMPLES



Cobalt



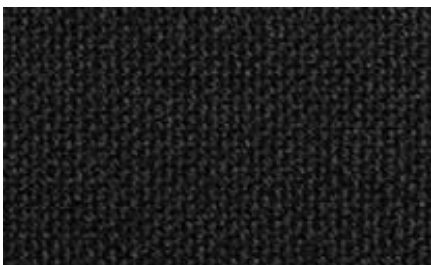
Wine



Granite



Solano



Black



Teal



PLUS many other colours available.

MASTER DISTRIBUTOR FOR **Wenger** IN EUROPE AND RUSSIA

Festival House, 4 Chapman Way, Tunbridge Wells, Kent, TN2 3EF, United Kingdom
Tel: +44 (0)1892 619719 Email: sales@blackcatmusic.co.uk

Black Cat  **MUSIC & ACOUSTICS**

To order, call us on **UK FREEPHONE 0800 072 7799** | Order online at www.blackcatmusic.com